

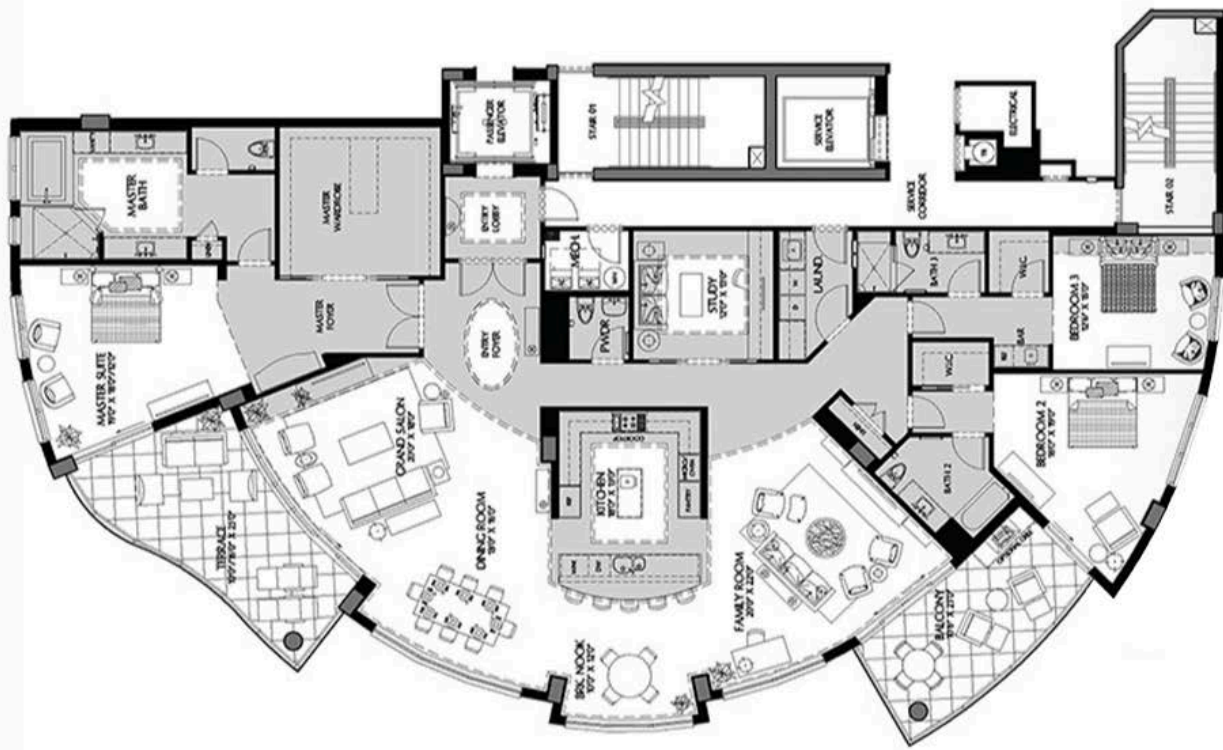
# AQUA II

At Pelican Isle

## ESTATE RESIDENCE 1

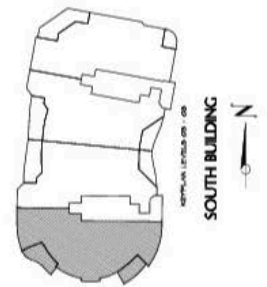
### LEVELS 3-8

AQUA  
At Pelican Isle



- 3 Bedrooms
- 3 ½ Baths
- Den
- Family Room
- Breakfast Nook
- Dining Room
- Grand Salon
- Private Elevator Foyer

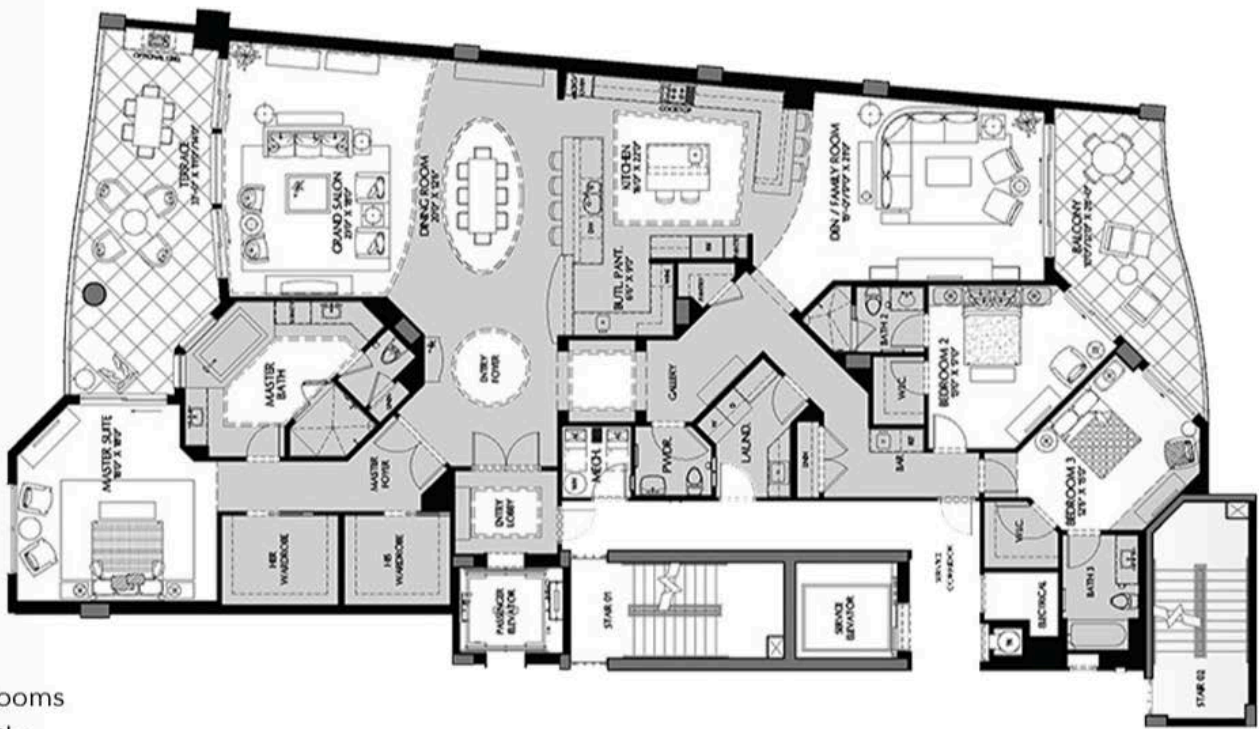
Under Air—4,171 sq. ft.  
Terraces—299 sq. ft.  
Balcony—231 sq. ft.  
**Total Living Area—4,701 sq. ft.**



# ESTATE RESIDENCE 2

## LEVELS 3-8

AQUA  
At Pelican Isle



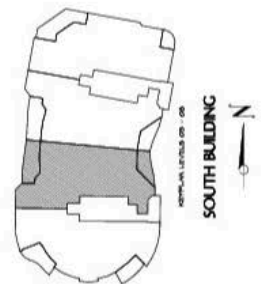
- 3 Bedrooms
- 3 ½ Baths
- Den/Family Room
- Dining Room
- Grand Salon
- Private Elevator Foyer

Under Air—3,940 sq. ft.

Terraces—391 sq. ft.

Balcony—242 sq. ft.

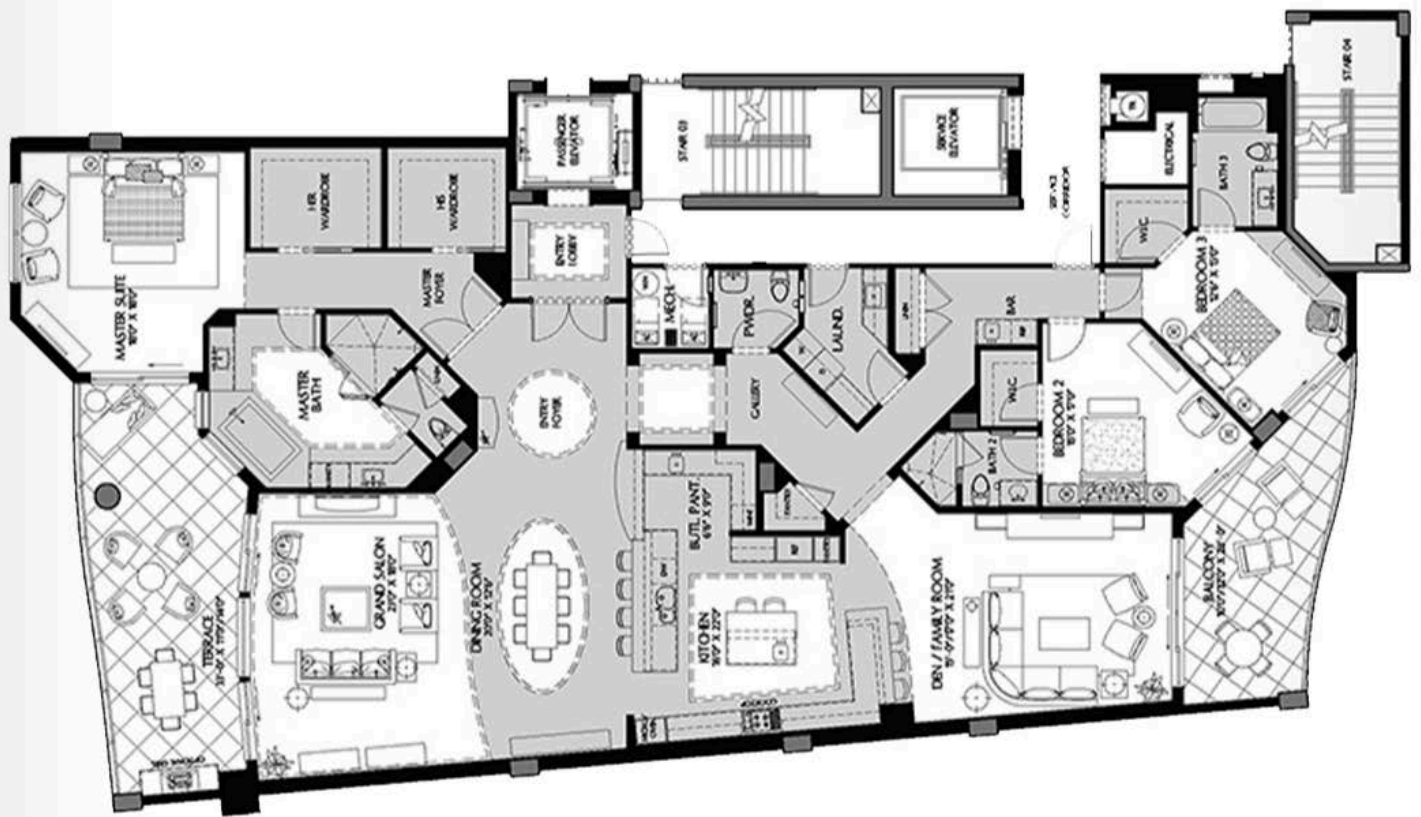
**Total Living Area—4,573 sq. ft.**



# ESTATE RESIDENCE 3

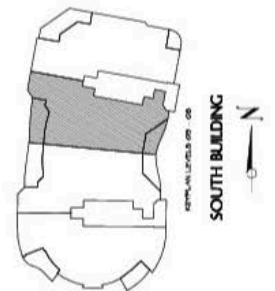
## LEVELS 3-9

**AQUA**  
At Pelican Isle



- 3 Bedrooms
- 3 ½ Baths
- Den/Family Room
- Dining Room
- Grand Salon
- Private Elevator Foyer

Under Air—3,940 sq. ft.  
Terraces—391 sq. ft.  
Balcony—242 sq. ft.  
**Total Living Area—4,573 sq. ft.**

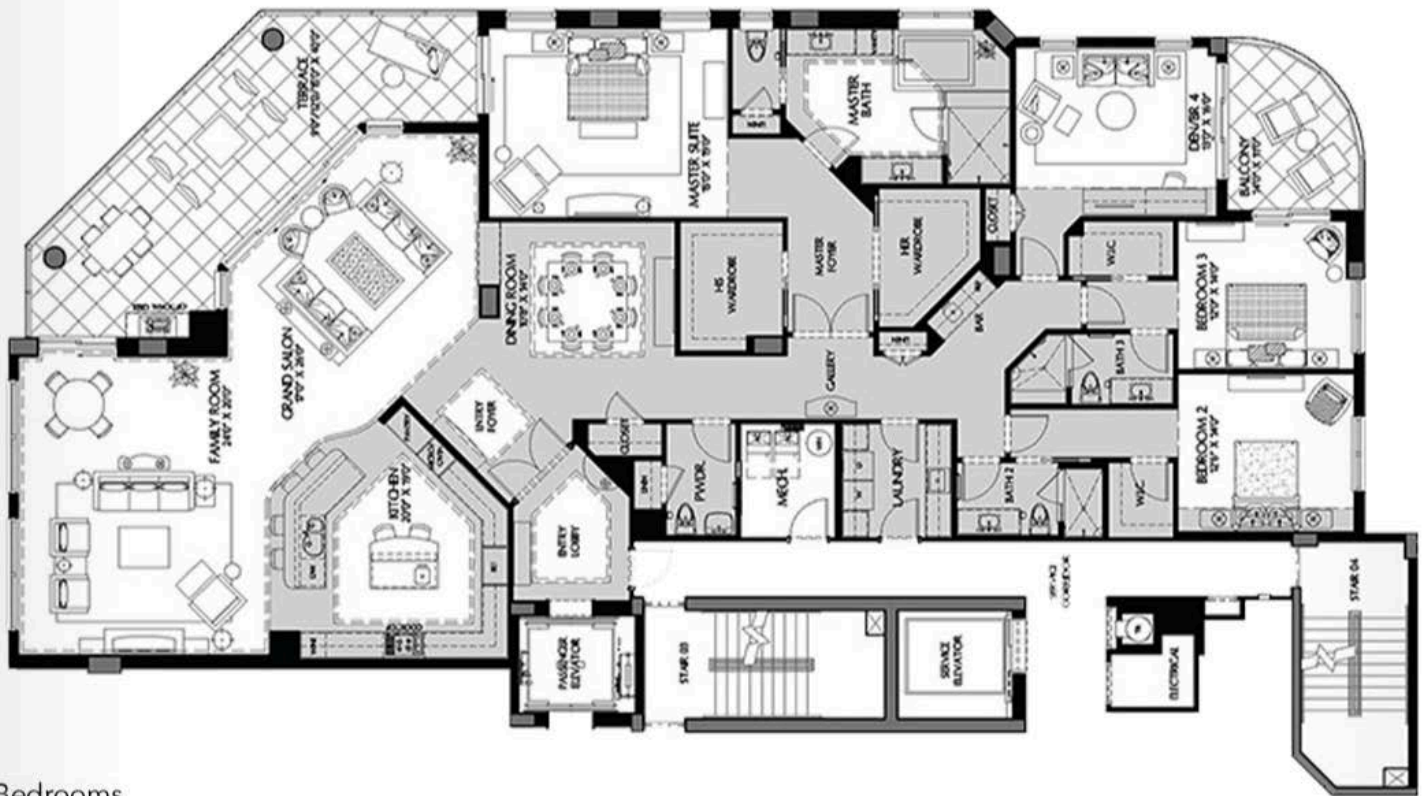




# ESTATE RESIDENCE 4

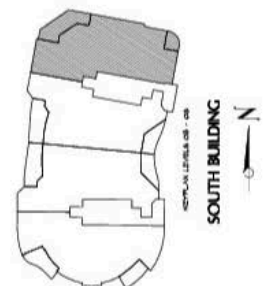
## LEVELS 3-11

**AQUA**  
At Pelican Isle



- 3 Bedrooms
- 3 ½ Baths
- Den/Bedroom 4
- Family Room
- Dining Room
- Grand Salon
- Private Elevator Foyer

Under Air—4,131 sq. ft.  
Terraces—478 sq. ft.  
Balcony—131 sq. ft.  
**Total Living Area—4,740 sq. ft.**



PENTHOUSE RESIDENCE 1002  
LEVEL 10

AQUA  
At Pelican Isle



- 4 Bedrooms
- 4 ½ Baths
- Family Room/Den
- Dining Room
- Master Study
- Bar
- Grand Salon
- Grand Terrace
- Private Elevator Foyer

Under Air—6,599 sq. ft.

Grand Terrace—1,734 sq. ft.

Terrace—775 sq. ft.

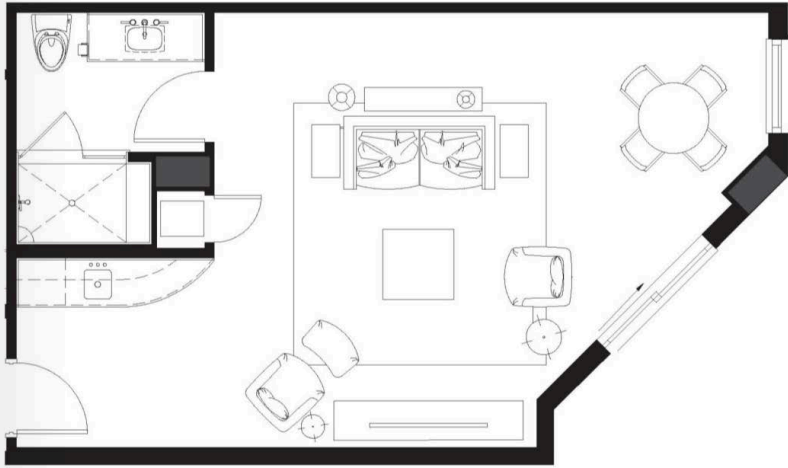
Balcony—637 sq. ft.

**Total Living Area—9,745 sq. ft.**



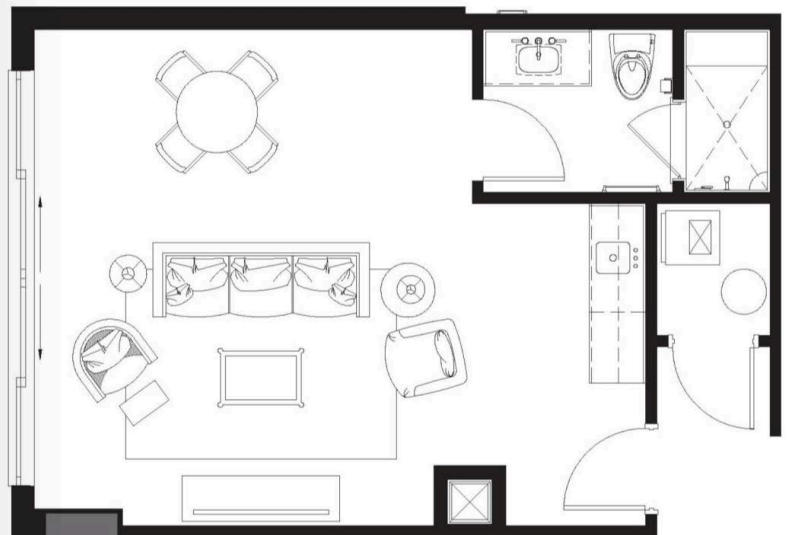
GUEST COTTAGE 09  
AMENITY LEVEL - 563 SF

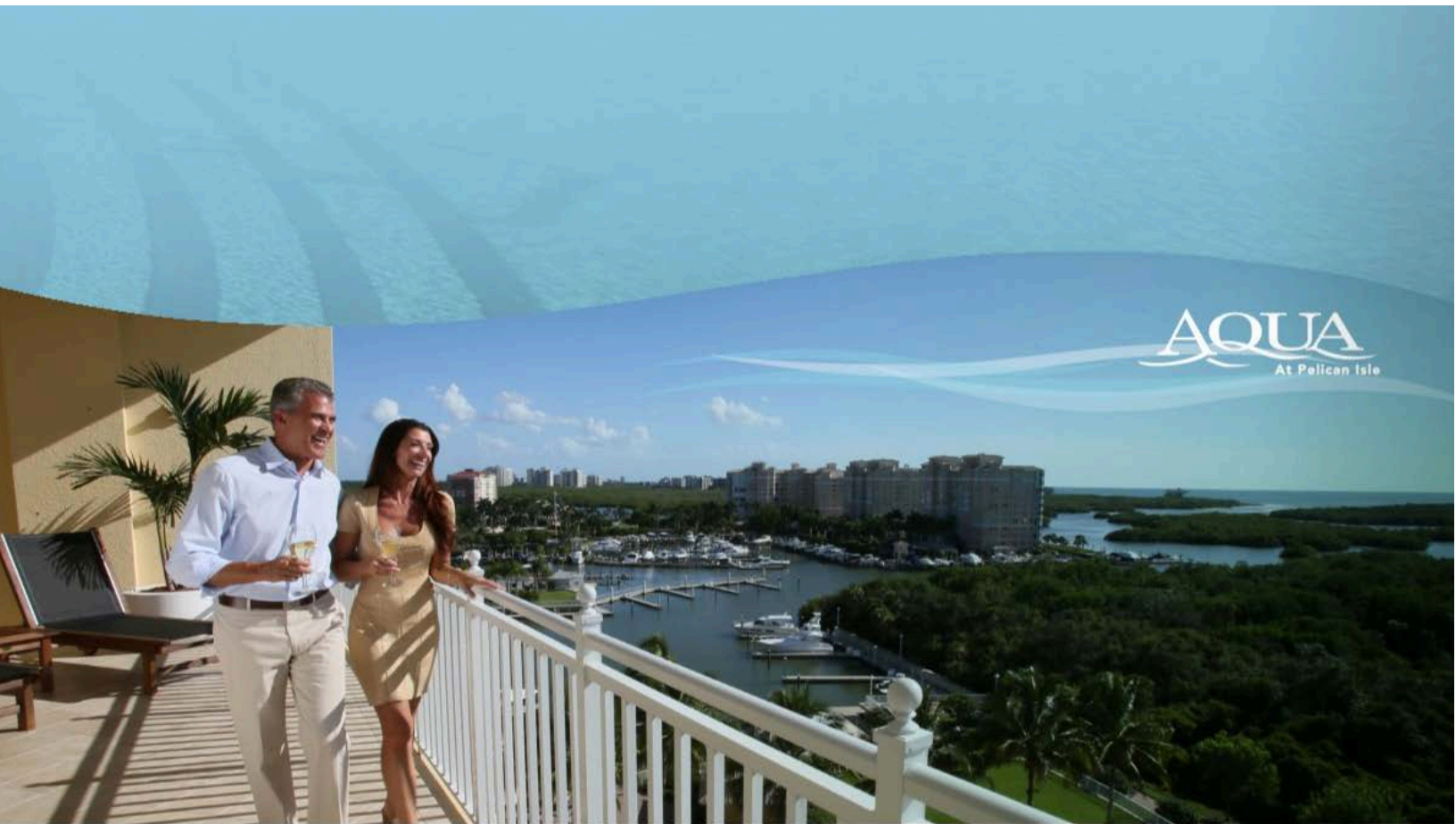
AQUA  
At Pelican Isle



GUEST COTTAGE 02  
AMENITY LEVEL - 507 SF

AQUA  
At Pelican Isle





**AQUA**  
At Pelican Isle

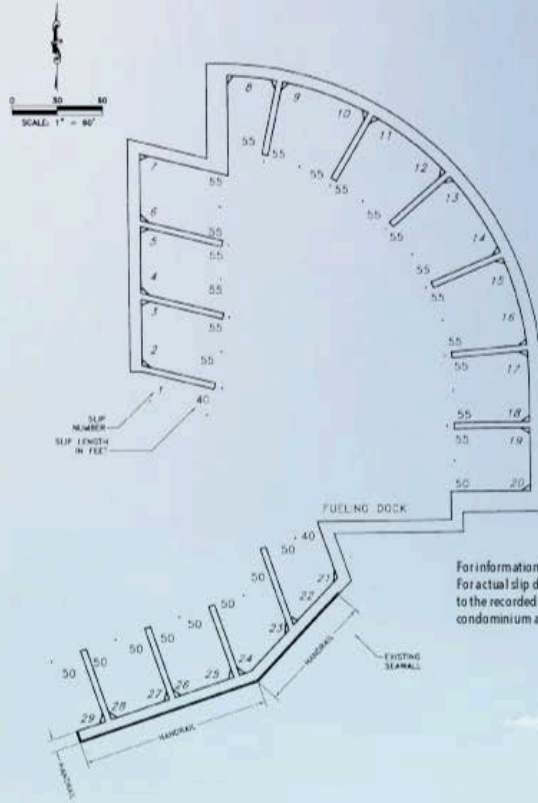
## CONCIERGE SERVICES

- Concierge-attended lobby seven days a week 8 am-5 pm
- Fax, copies, postage, Fed-Ex and Notary services available
- Amenities and guest cottage reservations
- Newspaper subscriptions delivered to residents' doors
- Acceptance of residents' packages and notification to owner upon receipt
- Scheduling of massage therapy services in private massage rooms
- Arrange transportation to and from airport
- Arrange limousine reservations and car rentals
- Dry cleaning, alterations, repairs drop off and acceptance
- Traditional concierge assistance  
*See concierge for brochure on hundreds of local restaurants, attractions, sightseeing tours, fishing excursions, movie theaters, schedules for special events, sporting events, golf facilities, sport and athletic activities, boat rentals, outdoor activities, health club facilities and more.*
- Relay accurate directions to desired destinations within local area and distribute MapQuest routes for convenience
- List of approved/preferred vendors for services: Housekeeping, handyman, personal fitness training, dock master services w(clean and care for boats upon return from a day on the water), pet care professionals, shopping assistance, automobile care/detailing and more.
- Provide access to approved service providers or guests while resident is away
- Email confirmation upon completion of arrangements coordinated for residents



## ACCESS THE WATER IMMEDIATELY

- 29 boat slips, accommodating vessels up to 55 feet
- Direct access to Wiggins Bay and the Gulf of Mexico in minutes
- Industry-leading Unifloat® concrete floating dock by Bellingham Marine utilizing 11 patented innovations
- One of only three passes in all of Naples
- Easy access for mooring and cleaning
- Fiberglass locker boxes with personal power center providing 2 each 50 Amp 120/240 Volt receptacles providing 100 Amps of power
- Sanitation pump system access
- Comprehensive fire protection
- Remarkably stable, providing a safe non-skid walkway for boaters and ability to handle storm surges without going under water
- With approval, slips allow for installation of boat-lifts and/or Sport Port Jet Ski Docks
- Provided kayaks for exploring the beaches and estuaries
- Marina promenade along side outdoor lounge..... (should distinguish the marina promenade does not specifically have those items, just along side them)
- Built using environmentally friendly materials and procedures



For informational purposes only  
For actual slip dimensions, refer  
to the recorded declaration of  
condominium and its exhibits



## LEARN ABOUT THE MARINA



ORAL REPRESENTATIONS CANNOT BE RELIED UPON AS CORRECTLY STATING REPRESENTATIONS OF THE DEVELOPER FOR CORRECT REPRESENTATIONS, MAKE REFERENCE TO THIS BROCHURE AND TO THE DOCUMENTS REQUIRED BY SECTION 718.503, FLORIDA STATUTES, TO BE FURNISHED BY A DEVELOPER TO A BUYER OR LESSEE. PRICES SUBJECT TO CHANGE WITHOUT NOTICE.



